



**TEKTELIC**  
communications  
— IoT for life —

# Cellular Configuration

## - Kona Micro & Kona Macro



---

# Introduction

- » Reference guide to configure Cellular Interface on Kona Micro and Macro gateways
- » Prerequisites
- » High-level procedure
  - » Inserting SIM Card
  - » Set APN for Cellular Interface
  - » Power Cycle Gateway

---

# Prerequisites

- » 3FF - Micro SIM Card
- » SIM card insertion tool (Tweezers)
- » Kona Micro and/or Kona Macro Gateway with accessories
- » Account on TEKTELIC Network Server or OAM Server
  - » If you do not have an account on the Network Server or OAM Server, please contact the support team at <https://support.tektelic.com>

# Inserting SIM Card for **KONA Micro**



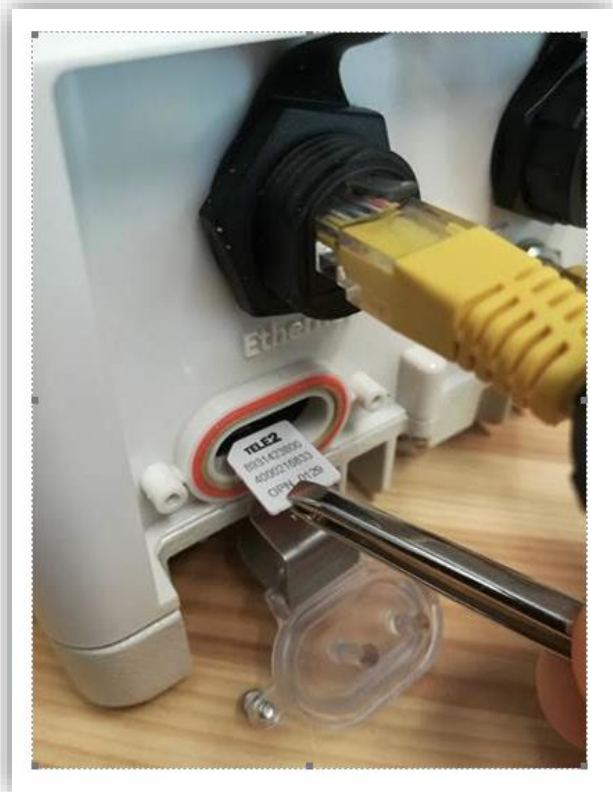
**Figure 1 : SIM card slot for Kona Micro**



**Figure 2 : Orientation of SIM Card while inserting into slot**

---

# Inserting SIM Card for **KONA Macro**



**Figure 3: Correct orientation for inserting SIM Card**

# Set APN for Cellular Interface

- » Log into either TEKTELIC Network Server (NA or EU) or OAM Server
- » Navigate to your gateway and click on WIRELESS MODEM tab and click on + sign to add APN:

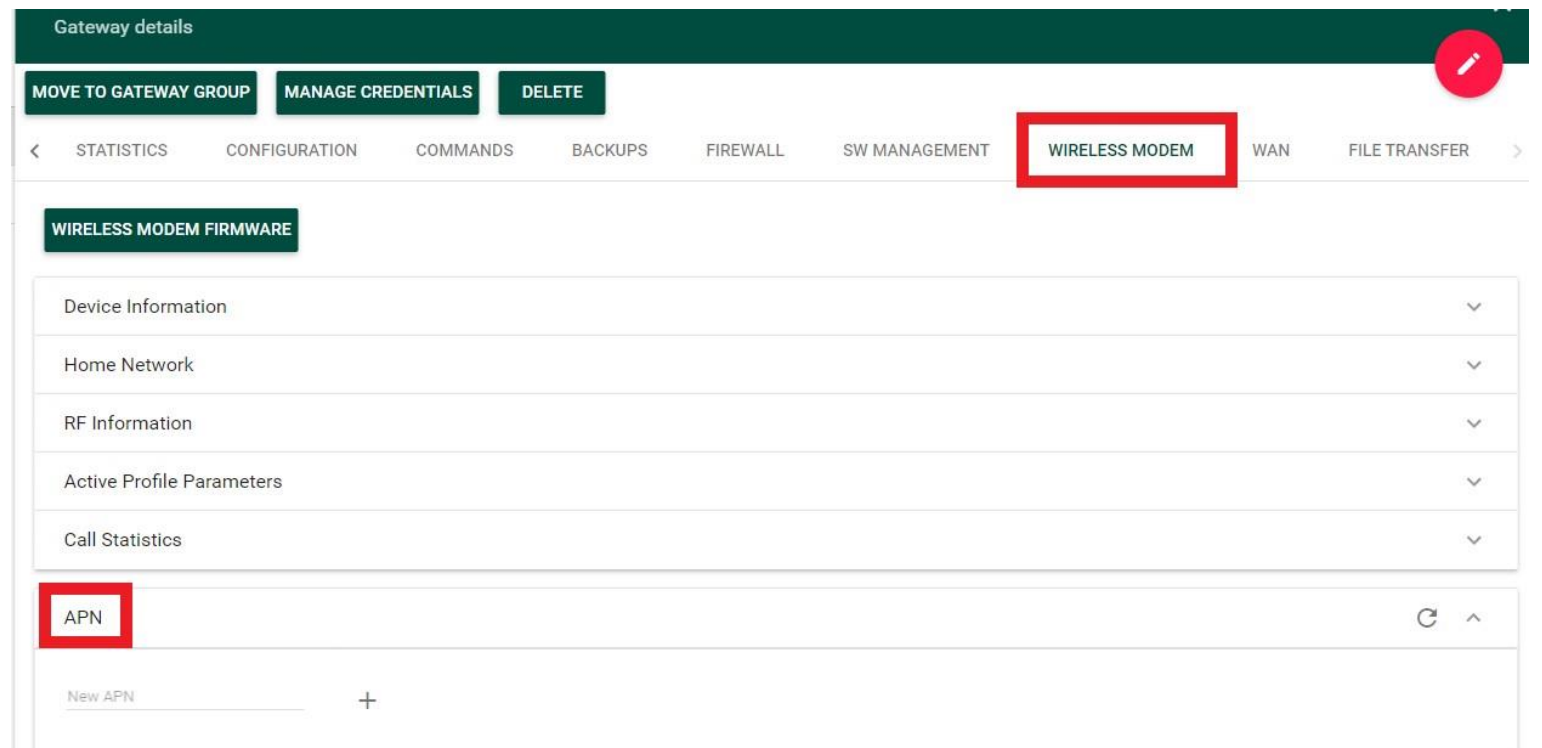


Figure 5: Wireless Modem tab on Network Server

# Cellular Interace Cont.

Figure 6: Wireless Modem tab on OAM Server

The screenshot displays the OAM Server interface for the Wireless Modem tab. At the top, there are three red buttons: "MOVE TO GATEWAY GROUP", "MANAGE CREDENTIALS", and "DELETE". Below these is a navigation bar with tabs: "< AY DETAILS", "LOCATION", "EVENTS", "CONFIGURATION", "COMMANDS", "BACKUPS", "FIREWALL", "SW MANAGEMENT", and "WIRELESS MODEM" (which is highlighted with a black border). Under the "WIRELESS MODEM" tab, there is a red button labeled "WIRELESS MODEM FIRMWARE". Below this are several expandable sections: "Device Information", "Home Network", "RF Information", "Active Profile Parameters", and "Call Statistics", each with a downward arrow. At the bottom, there is a section for "APN" (highlighted with a black border) with a refresh icon and an upward arrow. Below the "APN" section is a "New APN" input field with a plus sign.

---

# Power Cycle

- » After adding correct APN, power cycle the gateway.
- » **Note:** For Kona Micro gateway, you will also be required to remove battery while power cycling the gateway.



Best-In-Class, Carrier Grade &  
Most Cost Effective  
Portfolio of Gateways, Network Server,  
Sensors & Applications