

# ELT Series

LoRaWAN® indoor wireless sensors

LoRa  
Alliance  
Member



## ELT-2 & ELT Lite

ELT sensors are general LoRaWAN® devices for measuring analog or digital signals. They are enclosed in an IP67 box and are designed to be outside. The ELT is powered by an AA 3.6V battery, and its lifetime is estimated to be up to 10 years.

up to  
**10**  
years  
battery life time

Choose  
between  
internal or  
external  
antenna

### Use together with



Temperature sensors



Flow meters



Moisture sensors



Electricity meters



Water leak cable



Analog sensors

... or any other sensor for your application.

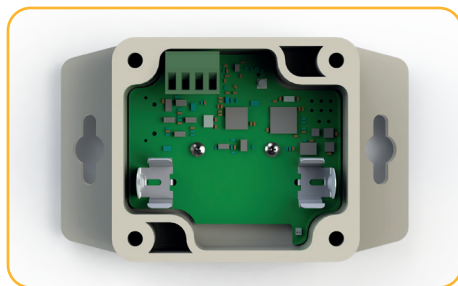
## Long range sensor

ELT is the ideal sensor for measuring in advanced places or extreme weather conditions. Use together with a suitable antenna to form your solution.

Depending on the environment and choice of antenna, you will discover that ELT has the capacity of measuring with a remarkably long range.

## Easy to configure

All ELSYS sensors are equipped with NFC (Near Field Communication) for easy configuration with a smart phone. You can change the sample rate, data rate, encryption keys, triggers, activation, and much more with our application Sensor Settings.



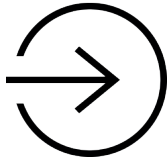
### Internal sensors

Inside the ELT-2, you will find four internal sensors: a temperature sensor, a humidity sensor, an accelerometer for orientation measurements, and an atmospheric pressure sensor.



# ELT Series

Add on to create a unique solution.



## ADC Module/ External Module

Modules that fits inside the ELT-2 and are intended for connecting external professional equipment. Connect platinum sensors, load cells, or control equipment of your choice.



## Half wave 915Mhz/868 Mhz antenna

A flexible hinged whip antenna with +3dBi gain.



## ELT breatheable weatherproof membrane

Makes measuring of humidity possible. Increases response time.



## Distance sensor

Ultrasonic distance sensor for measuring distances up to 5m.



## Meter ECH20 EC-5/10-HS

Determines volumetric water content (VWC) by measuring the dielectric constant of the media using capacitance/frequency domain technology.



## ELT external temperature probe

Temperature probe for ELT sensors, 1m cable with stripped ends for easy mounting.

**With ELT accessories, you can easily customize our products, depending on your needs. Visit our webpage to read more.**

## Supported external sensors

### ELT-2

- Analog input (0-10V)
- Pulse input (pullup/pulldown)
- DS18B20, 1-wire temperature sensor
- Switch/Button, normally open
- Digital input
- Meter 10HS, EC-5, water moisture sensor
- Water leak/sensor cable
- Maxbotix, ultrasound distance sensor
- GPS, with serial output

### ELT Lite

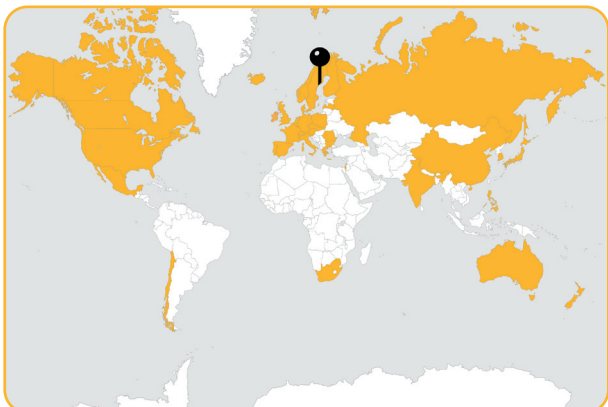
- Analog input (0-10V)
- Pulse input (pullup/pulldown)
- DS18B20, 1-wire temperature sensor
- Switch/Button, normally open
- Digital input
- Meter 10HS, EC-5, water moisture sensor
- Water leak/sensor cable

Contact us for information about other supported external sensors.



ELT-2 and maxbotix mounted

## ELSYS LoRaWAN® sensors around the world



ELSYS LoRaWAN® devices can be purchased via a distributor or directly through ELSYS Webshop.

Visit [www.elsys.se](http://www.elsys.se).

info@elsys.se  
support@elsys.se

+46 90 100 500  
ELSYS  
Industrivägen 12  
90130 Umeå  
Sweden